

NOTES:





1.  DENOTES APPLICABLE NOTE NUMBER WHEN THE NOTE IS REFERENCED IN THE FIELD OF THE DRAWING.
2. PUMP TESTED PER CASCON 102-S-001 PRIOR TO SHIPMENT.
3.  DATA SHOWN IN NAMEPLATE DETAIL, WARNING LABEL DETAIL AND ATEX LABEL DETAIL TO BE LASER MARKED BY CML.
4. APPROX. WEIGHT: 172 LBS.
5. RATED SPEED 2950 TO 3600 RPM. ROTATION CCW VIEWED FROM PUMP DRIVE END.
6. TABLE I PROVIDES BASIC PUMP CIRCUIT DATA. SEE CUSTOMER SPECIFICATION #5028 APPENDIX 7 FOR COMPLETE PUMP SPECIFICATION.
7.  THE PUMP IS DESIGNED TO BE MOUNTED VERTICALLY INTO THE SUPPLY RESERVOIR. SEALING IS PROVIDED AT THE SHAFT INTERFACES ONLY. A GASKET MUST BE SUPPLIED AT THE MOUNTING FLANGE-TANK INTERFACE.
8. RELIEF VALVE DISCHARGE EXITS PUMP THROUGH SAE STRAIGHT THREAD O-RING PORTS BELOW MOUNTING FLANGE.
9. REFER TO CASCON SPECIFICATION 102-S-011 FOR SHIPPING AND DOCUMENTATION REQUIREMENTS.
10. DIMENSIONS IN [] ARE IN MILLIMETERS.
11. CERTAIN PROCESSES AND/ OR PURCHASED PARTS IN THIS ASSEMBLY ARE CONSIDERED FUNCTIONALLY CRITICAL AND MAY ONLY BE SUBCONTRACTED TO, OR PURCHASED FROM, APPROVED SUPPLIERS LISTED ON DRAWING 10-D-001. REFER TO THE COMPONENTPART DRAWING FOR ADDITIONAL INFORMATION. CONSIDERATION TO ADD AN ALTERNATE SOURCE TO THE APPROVED LIST ON DRAWING 10-D-001 MUST INCLUDE CUSTOMER NOTIFICATION.
12. THIS PUMP CONFORMS TO ALL APPLICABLE CUSTOMER SABRE DOCUMENTS IN ELEMENTS OF DESIGN, MANUFACTURE, AND PACKAGING AS SET FORTH IN CUSTOMER SPECIFICATION #5028 APPENDIX#7 AND DRAWING # RRE004491.
13.  ATEX AND CE MACHINE DIRECTIVE CERTIFIED FOR RATED OPERATING CONDITIONS ONLY. MUST BE INSTALLED AND MAINTAINED PER MANUAL 102-S-012.
14. REFER TO CASCON DRWAING 102-D-088-X FOR VALVE AND SEAL REBUILD KITS.

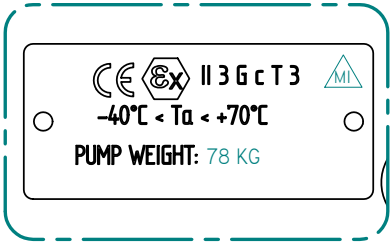
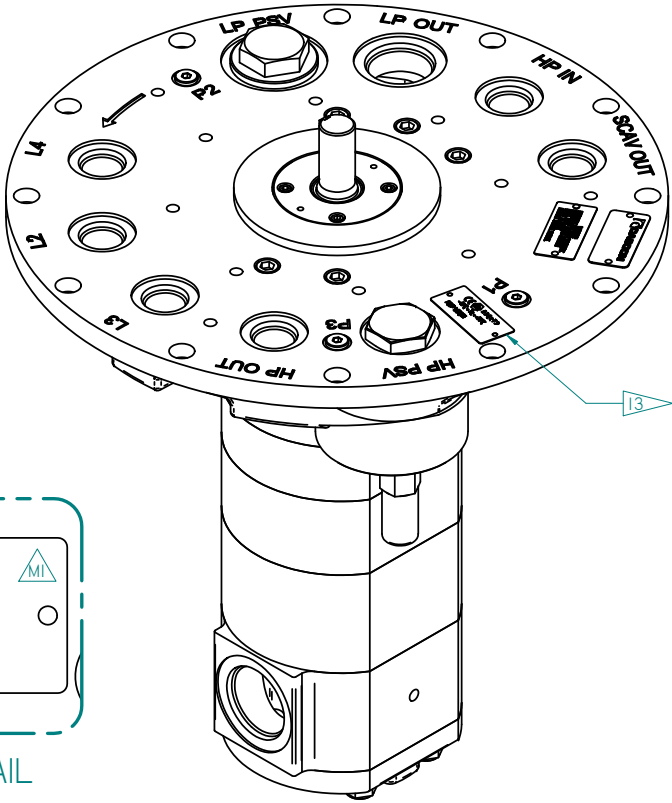
TABLE I. PUMP CIRCUIT DATA

CIRCUIT DESIGNATION	DESCRIPTION	DISPLACEMENT IN ³ /REV	DESIGN PRESS. PSIG	RELIEF SETTING PSIG
LP OUT	LUBE OIL OUTLET	2.375	240	350
L2	FRONT BEARING SCAVENGE INLET	.356	-5 TO 25	N/A
L3	CENTER BEARING SCAVENGE INLET	1.403	-5 TO 25	N/A
L4	REAR BEARING SCAVENGE INLET	1.403	-5 TO 25	N/A
HP OUT	HYDRAULIC OIL OUTLET	.713	750	1000
HP IN	HYDRAULIC OIL INLET	N/A	0 TO 350	N/A
SCAV OUT	COMMON SCAVENGE OUTLET	N/A	0 TO 25	N/A

TABLE 2. INSTRUMENTATION PORTS


P1	LUBE OIL INLET (LP IN)
P2	LUBE OIL OUTLET (LP OUT)
P3	HYDRAULIC OIL OUTLET (HP OUT)

CURRENT REVISION LEVEL				
ECO NO.	BY	DATE	DWG	PART
1558	PJC	06/03/16	L	I
1659	PJC	06/12/18	M	I
CONCEPTS AND INFORMATION CONTAINED ON THIS DRAWING ARE PROPRIETARY TO CASCON AND MAY NOT BE REPRODUCED WITHOUT WRITTEN PERMISSION FROM CASCON				

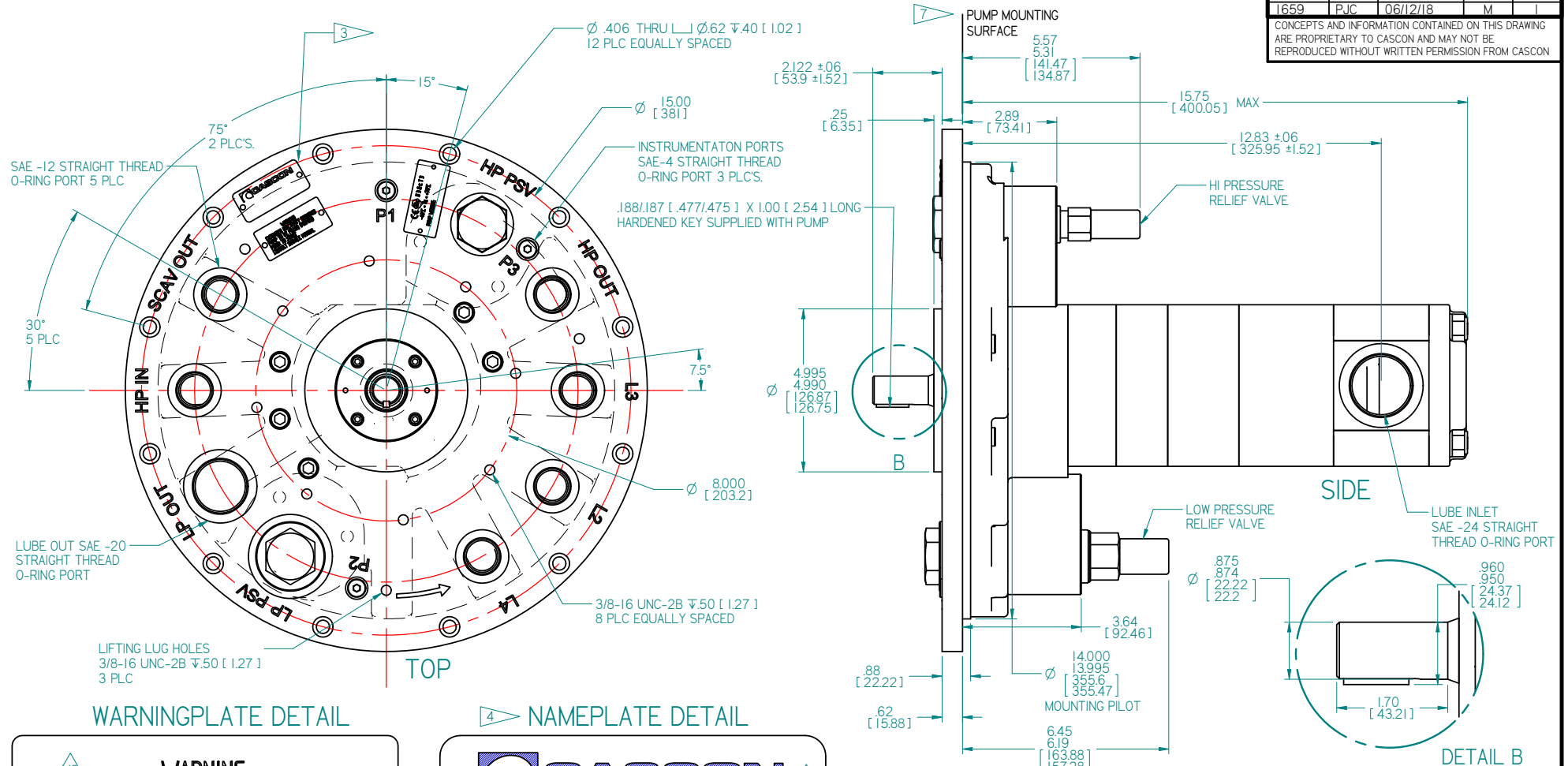


13 ATEX LABEL DETAIL

UNLESS OTHERWISE SPECIFIED:
DIMENSIONS ARE IN INCHES (mm)
FINISH IS 125 MICROINCH Ra MAXIMUM
INTERNAL RADII .020 MAXIMUM
TOLERANCES ARE:
X +/- .030
XX +/- .015
XXX +/- .005
ANGLES +/- 1/2 DEGREE
DRAWING INTERPRETATION PER ASME
Y14.5-2009 AND CASCON 10-S-003

 CASCON INC	
TITLE PRODUCT DRAWING, PN 102-D-071	
DRAWING NO. 102-D-071	SHEET 1 OF 3
DRAWN PJC 09/28/04	ENGINEER WRB 04/19/07

CURRENT REVISION LEVEL				
ECO NO.	BY	DATE	DWG	PART
1558	PJC	06/03/16	L	I
1659	PJC	06/12/18	M	I
CONCEPTS AND INFORMATION CONTAINED ON THIS DRAWING ARE PROPRIETARY TO CASCON AND MAY NOT BE REPRODUCED WITHOUT WRITTEN PERMISSION FROM CASCON				



WARNINGPLATE DETAIL

WARNING
 EXTENDED INACTIVITY REQUIRES
 PUMP TO BE FILLED (PRIMED)
 PRIOR TO START
 CONSULT SERVICE MANUAL

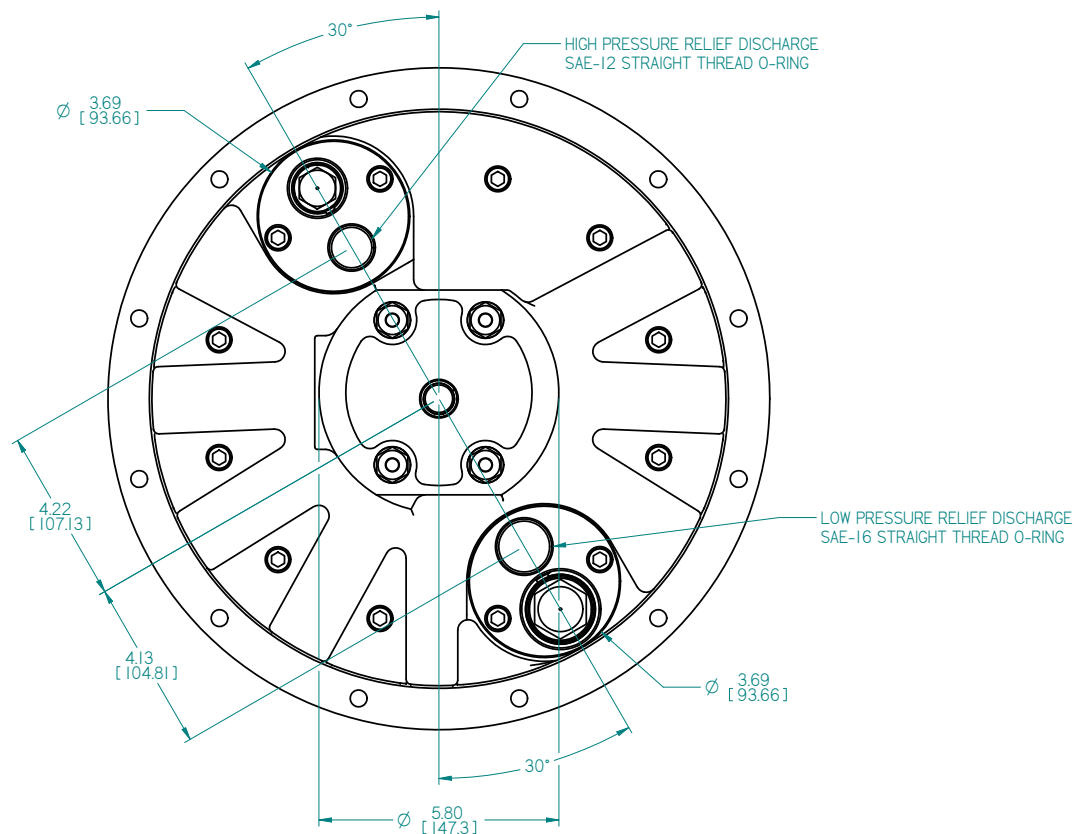
NAMEPLATE DETAIL

CASCON
 P/N: ONZP5 102-D-071 REV: "X"
 S/N: "XXX" "MM-DD-YY"
 CUSTOMER P/N: RRE004491


UNLESS OTHERWISE SPECIFIED:
 DIMENSIONS ARE IN INCHES (mm)
 FINISH IS 125 MICROINCH Ra MAXIMUM
 INTERNAL RADII .020 MAXIMUM
 TOLERANCES ARE:
 X ±.030
 XX ±.015
 XXX ±.005
 ANGLES ±1/2 DEGREE
 DRAWING INTERPRETATION PER ASME
 Y14.5-2009 AND CASCON 10-S-003

CASCON INC	
TITLE PRODUCT DRAWING, PN 102-D-071	
DRAWING NO. 102-D-071	SHEET 2 OF 3
DRAWN PJC 09/28/04	ENGINEER WRB 04/19/07

CURRENT REVISION LEVEL				M	I
ECO NO.	BY	DATE	DWG	PART	
1558	PJC	06/03/16	L	I	
1659	PJC	06/12/18	M	I	
CONCEPTS AND INFORMATION CONTAINED ON THIS DRAWING ARE PROPRIETARY TO CASCON AND MAY NOT BE REPRODUCED WITHOUT WRITTEN PERMISSION FROM CASCON					



UNLESS OTHERWISE SPECIFIED:
 DIMENSIONS ARE IN INCHES [mm]
 FINISH IS 125 MICROINCH Ra MAXIMUM
 INTERNAL RADII .020 MAXIMUM
 TOLERANCES ARE:
 X +/- .030
 XX +/- .015
 XXX +/- .005
 ANGLES +/- 1/2 DEGREE
 DRAWING INTERPRETATION PER ASME
 Y14.5-2009 AND CASCON 10-S-003

 CASCON INC	
TITLE PRODUCT DRAWING, PN 102-D-071	
DRAWING NO. 102-D-071	SHEET 3 OF 3
DRAWN PJC 09/28/04	ENGINEER WRB 04/19/07